



## 35 Moorwood Drive

, Oldham, OL8 2XD

Offers in excess of £175,000



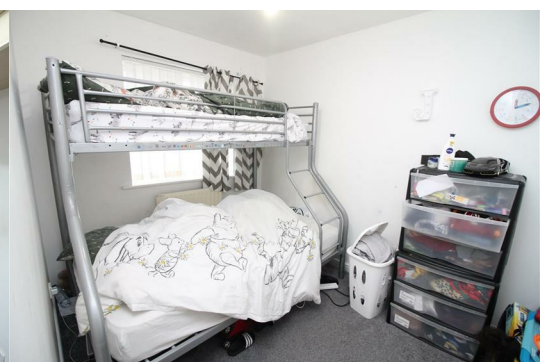
Welcome to a very well presented Semi Detached Four (4) Bedroom House located in a quite residential area of Oldham. Within range of a host amenities, schools and transport links, you can be sure you are in a good location.

The Ground Floor consist of the Entrance Hallway, spacious reception, Guest Toilet and Modern Fitted Kitchen, Dinning Area and under stairs storage.

French doors leads to private garden at the rear .

The First Floor comprises of Two double Bedroom and two single Bedroom , a contemporary family bathroom. The property benefits from Upvc windows, central gas heating system and Carpet Flooring.

Externally the property provides an off street parking for multiple cars.



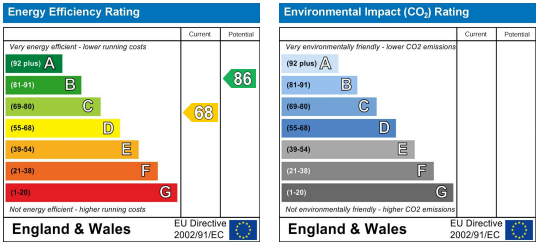
Area Map



Floor Plans



Energy Efficiency Graph



These particulars, whilst believed to be accurate are set out as a general outline only for guidance and do not constitute any part of an offer or contract. Intending purchasers should not rely on them as statements of representation of fact, but must satisfy themselves by inspection or otherwise as to their accuracy. No person in this firms employment has the authority to make or give any representation or warranty in respect of the property.